

FIBER DISTRIBUTION CABINETS

CUSTOM ACTIVE & PASSIVE SOLUTIONS
FOR RAPID FIELD DEPLOYMENT



DESIGNED & MANUFACTURED
IN THE USA*



CONTACT US



1841 Industrial Ave
San Angelo, TX 76904
(325) 262-4031

www.unitedtelsupply.com



and



DISTRIBUTION CABINETS FOR FIBER RAPID DEPLOYMENT



FIBER RAPID DEPLOYMENT

The Fiber Rapid Deployment (FRD) System from LYNN combines everything you need for quick and seamless fiber optic installations. We combine plug-and-play connectivity with in-the-field cable management, climate control, security and power distribution, ensuring even the largest and most complex systems deploy rapidly and operate reliably for years to come.

BUILDING AN FRD SYSTEM



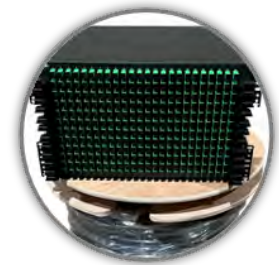
Step 1: Choose a Cabinet

Select a cabinet based on environment (NEMA rating), installation type (pad, pole, or wall mount) and required rack spaces.



Step 2: Customize the Cabinet

Customize the cabinet for your environment, including plinth height, air handling and access control.



Step 3: Populate the Cabinet

Populate the cabinet for quick field deployment with pre-terminated rack panels, splitters and other cabling and connectivity components.

CHOOSING A CABINET: NEMA RATINGS

	TYPE 1	TYPE 2	TYPE 3	TYPE 3R	TYPE 4
ENVIRONMENT	INDOOR	INDOOR	INDOOR / OUTDOOR	INDOOR / OUTDOOR	INDOOR / OUTDOOR
COMPARABLE IP RATING	IP20	IP22	IP55	IP55	IP66
RUGGED CONSTRUCTION	■	■	■	■	■
FALLING DUST / DIRT	■	■	■	■	■
BLOWN DUST / DIRT			■		■
SPLASHED WATER		■	■	■	■
RAIN			■	■	■
SLEET			■	■	■
SNOW			■	■	■
PRESSURE HOSED WATER					■

*Is your environment not represented above? Contact NSI for a custom quote of additional options with enhanced NEMA protection.

CONTACT US



1841 Industrial Ave
San Angelo, TX 76904
(325) 262-4031

www.unitedtelsupply.com



and



DISTRIBUTION CABINETS FOR FIBER RAPID DEPLOYMENT

NEMA 3 OUTDOOR FDH CABINET



LYNN's NEMA 3 cabinet is ideal for weather-exposed outdoor and industrial indoor applications. Customizations include rack height, plinth height, and factory-installed cabling and connectivity.

Key Features

- NEMA 250 Type 3 rating for indoor and outdoor installations
- Rated for exposure to windblown dust, rain, sleet and snow
- Available in 8U, 16U or 24U configurations
- Available with 6" or 12" plinth
- Front and rear door access with 3-pt latch swing handle with hasp
- Depth adjustable 19" EIA mounting rails with installed fiber spools
- Fiber splitter mounting bracket allows mounting in 18 different locations
- Removable bottom gland plate for easy access to plinth
- Removeable plinth cover panels for easy access to cables and conduit
- Designed for pad mount

SPECIFICATIONS

RATING	NEMA 250 TYPE 3
RACK TYPE	19" EIA
RACK UNITS	8U 16U 24U
8U DIMENSIONS	20.00"H X 34.00"W X 22.00"D
16U DIMENSIONS	34.00"H X 34.00"W X 22.00"D
24U DIMENSIONS	42.00"H X 34.00"W X 22.00"D
8U MAX CAPACITY	288 FIBER 9 NX32 SPLITTERS
16U MAX CAPACITY	576 FIBER 18 NX32 SPLITTERS

24U MAX CAPACITY	864 FIBER 27 NX32 SPLITTERS
CONSTRUCTION MATERIAL	ALUMINUM
COLOR	GRAY
COATING	UV-RATED TEXTURED
PLINTH	6" 12"
LIFTING EYES	4
MOUNTING OPTIONS	PAD MOUNT
COUNTRY OF ORIGIN	USA

CUSTOMIZATIONS & KITTING



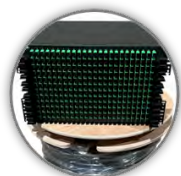
Rack Height

Available in 8U or 14U configurations. Both configurations feature depth adjustable 19" EIA mounting rails.



Plinth Height

Available with a matching 6" or 12" plinth base pedestal. Both configurations feature removable and lockable cover panels for access to cables and conduit.



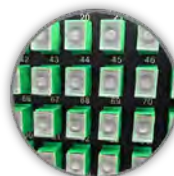
Pre-Terminated FRD Panels

Available with pre-terminated rack panels and multistrand fiber. Panels ship pre-mounted with spooled fiber for rapid deployment.



Easier-to-Install Splitters

Side-mounted splitters facilitate higher-density installations and are easier to install.



Clear Dust Caps

Integrated clear dust caps on FRD panel connectors quickly show live connections for easy patching.



NEMA 4 OUTDOOR CABINET



LYNN's NEMA 4 cabinet is ideal for weather-exposed outdoor and industrial indoor applications. Customizations include enhanced access control, enhanced airflow and temperature management, and factory-installed cabling and connectivity.

Key Features

- NEMA 250 Type 4 rating for indoor and outdoor installations
- Rated for exposure to windblown dust, hose directed water, rain, sleet and snow
- 26U height
- 12" plinth
- Front and rear door access with 3-pt latching and defeater handle or optional RFID reader
- Removable side gland plates for optional airflow and temperature management
- Depth adjustable 19" EIA mounting rails with installed fiber spools
- Removable bottom gland plate for easy access to plinth
- Designed for pad mount

SPECIFICATIONS

RATING	NEMA 250 TYPE 4
RACK TYPE	19" EIA
RACK UNITS	26U
DIMENSIONS	48.00"H X 28.00"W X 34.00"D
CONSTRUCTION MATERIAL	GALVANIZED STEEL
COLOR	BEIGE

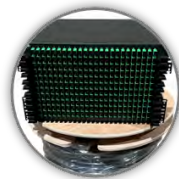
COATING	UV-RATED TEXTURED
PLINTH	12"
LIFTING EYES	4
MOUNTING OPTIONS	PAD MOUNT
COUNTRY OF ORIGIN	USA

CUSTOMIZATIONS & KITTING



Access Control

Available with a locking defeater handle (standard) or optional IP65-rated RFID reader for enhanced user access and monitoring.



Pre-Terminated FRD Panels

Available with pre-terminated rack panels and multistrand fiber. Panels ship pre-mounted with spooled fiber for rapid deployment.



Airflow & Temperature Management

Available without airflow (standard), with a 142 CFM fan kit and exhaust filter, or with a 2000 – 3000 BTU air-conditioning unit.



High-Density Splitter Holder

Available with high-density splitter holders supporting models from LYNN and other manufacturers.



DISTRIBUTION CABINETS FOR FIBER RAPID DEPLOYMENT

NEMA 3R WALL MOUNT OUTDOOR CABINET



LYNN's NEMA 3R wall-mount cabinet is ideal for weather-exposed outdoor and industrial indoor applications. The cabinet is designed for wall and pole mounting, and features a bottom panel with three 2.5" conduit holes (for 2" conduit) and a drain hole. Customizations include enhanced airflow, temperature management, and factory-installed cabling and connectivity.

Key Features

- NEMA 250 Type 3R rating for indoor and outdoor installations
- Rated for exposure to falling dust, rain, sleet and snow
- Internal 18" x 15" subpanel for mounting cable and connectivity
- Welded body with hinged front door
- Locking quarter-turn hex drive latches
- Three 2.5" vinyl conduit holes (supports 2" conduit) for bottom cable access
- Bottom drain hole with plug
- Removable side gland plates for optional airflow and temperature management
- Designed for wall mount or pole mount

SPECIFICATIONS

RATING	NEMA 250 TYPE 3R
EQUIPMENT MOUNTING	INTERNAL SUBPANEL
SUBPANEL DIMENSIONS	18.00"H x 15.00"W
OVERALL DIMENSIONS	20.00"H x 18.00"W x 9.00"D
CONSTRUCTION MATERIAL	GALVANIZED & STAINLESS STEEL
COLOR	BEIGE

COATING	UV-RATED TEXTURED
PLINTH	NA
LIFTING EYES	NA
MOUNTING OPTIONS	WALL MOUNT POLE MOUNT
COUNTRY OF ORIGIN	USA

CUSTOMIZATIONS & KITTING



Airflow & Temperature Management
Available without airflow (standard), with a fan kit and exhaust filter, or with a 60W plate-mounted heater unit.



High-Density Splice Tray Trees
LYNN offers high-density tree brackets supporting either six or twelve splice trays.



Versatile Wood Mounting
An optional fiber distribution and management kit for wood-backed cabinets includes LGX holders, cable managers, ground lugs and mounting hardware.



Multiple Splice Tray Configurations
LYNN offers splice trays in a variety of sizes and configurations.

CONTACT US



1841 Industrial Ave
San Angelo, TX 76904
(325) 262-4031

www.unitedtelsupply.com

UNITED
TEL • SUPPLY

and

LYNN



NEMA 4 WALL MOUNT DOUBLE SWING OUTDOOR CABINET



LYNN's NEMA 4 wall mount double swing cabinet is ideal for weather-exposed outdoor and industrial indoor applications. The cabinet is designed for wall and pole mounting with flexible cable management options. Customizations include rack height, cabinet depth, enhanced access control, enhanced airflow, temperature management, and factory-installed cabling and connectivity.

Key Features

- NEMA 250 Type 4 rating for indoor and outdoor installations
- Rated for exposure to windblown dust, hose directed water, rain, sleet and snow
- Available in 11U, 18U or 25U configurations
- Available in 24" or 32" cabinet depths
- Two pairs of depth adjustable 19" EIA mounting rails
- Welded body with hinged front door
- Locking swing handle with hasp and 3-pt latch or optional locking quarter-turn hex drive latches
- External rear compression twist latches between center and rear section
- Removable side gland plates for optional airflow and temperature management
- Designed for double swing wall mount or pole mount
- Lift off rear hinges for easy installation

SPECIFICATIONS

RATING	NEMA 250 TYPE 4
RACK TYPE	19" EIA
RACK UNITS	11U 18U 25U
CABINET DEPTH	24" 32"
MIN DIMENSIONS	24.00"H X 24.00"W X 24.00"D
MAX DIMENSIONS	48.00"H X 24.00"W X 30.00"D

CONSTRUCTION MATERIAL	GALVANIZED STEEL
COLOR	GRAY
COATING	UV-RATED TEXTURED
MOUNTING OPTIONS	WALL MOUNT POLE MOUNT
COUNTRY OF ORIGIN	USA

CUSTOMIZATIONS & KITTING



Rack Height

Available in 11U, 14U or 25U configurations. All configurations feature two pair of depth adjustable 19" EIA mounting rails.



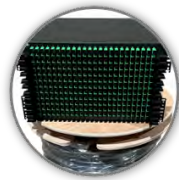
Airflow & Temperature Management

Available without airflow (standard), with a 142 CFM fan kit and exhaust filter, or with a 2000 – 3000 BTU air-conditioning unit and factory-installed 5" thick R3 insulation.



Cabinet Depth

Available in 24" or 32" cabinet depth, providing versatility for cabling, connectivity, and cable management.



Pre-Terminated FRD Panels

Available with pre-terminated rack panels and multistrand fiber. Panels ship pre-mounted with spooled fiber for rapid deployment.



Access Control

Available with a locking swing handle (standard) or optional quarter-turn hex drive latches.



DISTRIBUTION CABINETS FOR FIBER RAPID DEPLOYMENT

NEMA 3R & 4 SINGLE BAY OUTDOOR CABINET



LYNN's single bay cabinets are available in NEMA 3R and NEMA 4 ratings, making them ideal for outdoor and indoor applications. Customizations include rack height, cabinet depth, enhanced airflow and temperature management, and factory-installed cabling and connectivity.

Key Features

- NEMA 250 Type 3R rating for indoor and outdoor installations; ideal for exposure to falling dust, rain, sleet and snow
- NEMA 250 Type 4 rating for indoor and outdoor installations; ideal for exposure to windblown dust, hose directed water, rain, sleet and snow
- Available in 16U, 24U, 30U or 42U configurations
- Available with 8" or 16" plinth
- Available in 32", 36" or 42" depths for flexible cabling and cable management
- Two pairs of depth adjustable 19/23" EIA mounting rails
- Front and rear door access with 3-pt latch swing handle with hasp
- Wind stop and seamless weather gasket on all doors
- Factory-installed power and grounding
- Optional airflow and temperature management
- Designed for pad mount

SPECIFICATIONS

RATING	NEMA 250 TYPE 3R 4
RACK TYPE	19" EIA 23" EIA
RACK UNITS	16U 24U 30U 42U
CABINET DEPTH	32" 36" 42"
MIN DIMENSIONS	34.00"H X 30.00"W X 32.00"D
MAX DIMENSIONS	79.50"H X 30.00"W X 42.00"D
CONSTRUCTION MATERIAL	ALUMINUM

COLOR	GRAY
COATING	UV-RATED TEXTURED
PLINTH	8" 16"
LIFTING EYES	4
MOUNTING OPTIONS	PAD MOUNT
COUNTRY OF ORIGIN	USA

CUSTOMIZATIONS & KITTING



NEMA Rating

Available in two NEMA ratings depending on environment. NEMA 3R provides protection from falling dust, rain, sleet, and snow. NEMA 4 enhances protection from blown dust and pressure hosed water.



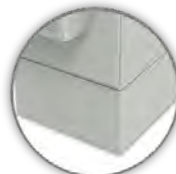
Rack Height

Available in 24U or 28U configurations. Both configurations feature depth adjustable 19/23" EIA mounting rails with zero-U mounting patterns for accessories.



Cabinet Depth

Available in 32", 36" or 42" cabinet depth, providing versatility for cabling, connectivity, and cable management.



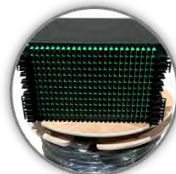
Plinth Height

Available with a matching 8" or 16" plinth base pedestal.



Airflow & Temperature Management

Available without airflow (standard), with air conditioning, or with a heat exchanger and factory-installed 5" thick R3 insulation. The temperature control on/off switch can be installed on the front or rear of the frame.



Pre-Terminated FRD Panels

Available with pre-terminated rack panels and multistrand fiber. Panels ship pre-mounted with spooled fiber for rapid deployment.

CONTACT US



1841 Industrial Ave
San Angelo, TX 76904
(325) 262-4031

www.unitedtelsupply.com



and



DISTRIBUTION CABINETS FOR FIBER RAPID DEPLOYMENT

NEMA 3R & 4 DOUBLE BAY OUTDOOR CABINET



LYNN's double bay cabinets are available in NEMA 3R and NEMA 4 ratings, making them ideal for outdoor and indoor applications. Customizations include rack height, cabinet depth, enhanced airflow and temperature management, and factory-installed cabling and connectivity.

Key Features

- NEMA 250 Type 3R rating for indoor and outdoor installations; ideal for exposure to falling dust, rain, sleet and snow
- NEMA 250 Type 4 rating for indoor and outdoor installations; ideal for exposure to windblown dust, hose directed water, rain, sleet and snow
- Available in 24U or 28U configurations
- Available with 8" or 16" plinth
- Available in 32", 36" or 40" depths for flexible cabling and cable management
- Two pairs of depth adjustable 19/23" EIA mounting rails
- Front and rear door access with 3-pt latch swing handle with hasp
- Wind stop and seamless weather gasket on all doors
- Factory-installed power and grounding
- Optional airflow and temperature management
- Designed for pad mount

SPECIFICATIONS

RATING	NEMA 250 TYPE 3R 4
RACK TYPE	19" EIA 23" EIA
RACK UNITS	24U 28U
CABINET DEPTH	32" 36" 40"
MIN DIMENSIONS	48.00"H X 30.00"W X 32.00"D
MAX DIMENSIONS	58.50"H X 30.00"W X 40.00"D
CONSTRUCTION MATERIAL	ALUMINUM

COLOR	GRAY
COATING	UV-RATED TEXTURED
PLINTH	8" 16"
LIFTING EYES	4
MOUNTING OPTIONS	PAD MOUNT
COUNTRY OF ORIGIN	USA

CUSTOMIZATIONS & KITTING



NEMA Rating

Available in two NEMA ratings depending on environment. NEMA 3R provides protection from falling dust, rain, sleet, and snow. NEMA 4 enhances protection from blown dust and pressure hosed water.



Plinth Height

Available with a matching 8" or 16" plinth base pedestal.



Rack Height

Available in 24U or 28U configurations. Both configurations feature depth adjustable 19/23" EIA mounting rails with zero-U mounting patterns for accessories.



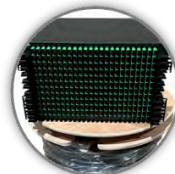
Airflow & Temperature Management

Available without airflow (standard), with air conditioning, or with a heat exchanger and factory-installed 5" thick R3 insulation. The temperature control on/off switch can be installed on the front or rear of the frame.



Cabinet Depth

Available in 32", 36" or 40" cabinet depth, providing versatility for cabling, connectivity, and cable management.



Pre-Terminated FRD Panels

Available with pre-terminated rack panels and multistrand fiber. Panels ship pre-mounted with spooled fiber for rapid deployment.

CONTACT US



1841 Industrial Ave
San Angelo, TX 76904
(325) 262-4031

www.unitedtelsupply.com



and



DISTRIBUTION CABINETS FOR FIBER RAPID DEPLOYMENT



	NEMA 3 CABINET	NEMA 4 CABINET	NEMA 3 WALL MOUNT CABINET	NEMA 4 WALL MOUNT DOUBLE SWING CABINET	NEMA 3R & 4 SINGLE BAY CABINET	NEMA 3R & 4 DOUBLE BAY CABINET
RATING	NEMA 250 TYPE 3	NEMA 250 TYPE 4	NEMA 250 TYPE 3R	NEMA 250 TYPE 4	NEMA 250 TYPE 3R NEMA 250 TYPE 4	NEMA 250 TYPE 3R NEMA 250 TYPE 4
PAD MOUNT	■	■			■	■
POLE MOUNT	■		■	■		
WALL MOUNT			■	■		
RACK TYPE	19" EIA	19" EIA	NA	19" EIA	19" / 23" EIA	19" / 23" EIA
MIN RACK SPACES	8U	26U	NA	11U	16U	24U
MAX RACK SPACES	24U	26U	NA	25U	42U	28U
MIN DIMENSIONS (H X W X D)	20" X 34" X 22"	48" X 28" X 34"	20" X 18" X 9"	24" X 24" X 24"	34" X 30" X 32"	48" X 30" X 32"
MAX DIMENSIONS (H X W X D)	42" X 34" X 22"	48" X 28" X 34"	20" X 18" X 9"	48" X 24" X 30"	80" X 30" X 42"	59" X 30" X 40"
PLINTH	■	■	NA	NA	■	■
PLINTH HEIGHT	6" 12"	12"	NA	NA	8" 16"	8" 16"
LIFTING EYES	4	4	NA	NA	4	4
MATERIAL	ALUMINUM	STEEL	STEEL	STEEL	ALUMINUM	ALUMINUM
COLOR	GRAY	BEIGE	BEIGE	GRAY	GRAY	GRAY
KEYLOCK	■	■	■	■	■	■
RFID SECURITY (OPTIONAL)		■				
FAN / EXHAUST KIT (OPTIONAL)		■	■	■		
AIR CONDITIONING (OPTIONAL)		■		■	■	■
HEATING (OPTIONAL)			■		■	■
SOLAR SHIELD	■	■			■	■
PRE-INSTALLED POWER & GROUND					■	■
COUNTRY OF ORIGIN	USA	USA	USA	USA	USA	USA

*Features and specifications subject to change based on actual configuration of cabinet.

CONTACT US



1841 Industrial Ave
San Angelo, TX 76904
(325) 262-4031

www.unitedtelsupply.com



and



DISTRIBUTION CABINETS FOR FIBER RAPID DEPLOYMENT

LYNN manufactures a variety of cable management and connectivity products designed for cabinet installation. Products can be pre-installed in or bundled with LYNN cabinets for rapid deployment in the field.

FIBER RAPID DEPLOYMENT PANELS



Fiber Rapid Deployment (FRD) panels feature factory-installed fiber patching with pre-spliced multistrand cable.

Key Features

- Factory-terminated patch panels for quick field deployment
- Pre-spliced and spooled multistrand fiber pigtail
- Available with standard bend-insensitive outdoor, ribbon and micro-armored single mode fiber
- 19" or 23" EIA mounting
- SC/APC connectors

PART NUMBER	RACK TYPE	RACK UNITS	FIBER CONNECTIONS	CABLE LENGTH	CABLE CONSTRUCTION
FRD-SCA1-144-SO-150F	19" / 23" EIA	3U	144 SC/APC	150'	STANDARD OUTDOOR
FRD-SCA1-144-SOA-150F	19" / 23" EIA	3U	144 SC/APC	150'	MICRO-ARMORED OUTDOOR
FRD-SCA1-144-SOR-150F	19" / 23" EIA	3U	144 SC/APC	150'	RIBBON OUTDOOR
FRD-SCA1-144-SORA-150F	19" / 23" EIA	3U	144 SC/APC	150'	RIBBON MICRO-ARMORED OUTDOOR
FRD-SCA1-288-SO-150F	19" / 23" EIA	6U	288 SC/APC	150'	STANDARD OUTDOOR
FRD-SCA1-288-SOR-150F	19" / 23" EIA	6U	288 SC/APC	150'	RIBBON OUTDOOR
FRD-SCA1-288-SORA-150F	19" / 23" EIA	6U	288 SC/APC	150'	RIBBON MICRO-ARMORED OUTDOOR
FRD-SP-LGX	19" / 23" EIA	UNIVERSAL ABS / RUGGED SPLITTER HOLDER WITH LGX MOUNTING FOR FEEDER CONNECTIONS			

*Custom configurations available upon request.

CABLE MANAGERS



Horizontal



Angled



Side Rack



Side Rail

PART NUMBER	RACK TYPE	RACK UNITS	STYLE	RINGS
PRO-CBL-MGR-1U-5PR	19" EIA	1U	HORIZONTAL FULL RACK WIDTH	5
PRO-CBL-MGR-2U-5PR	19" EIA	2U	HORIZONTAL FULL RACK WIDTH	5
PRO-CBL-MGR-1UV-4PR	19" EIA	1U	ANGLED FULL RACK WIDTH	4
MET-1U-SM-V2	19" / 23" EIA	1U	SIDE RACK MOUNT	1
MET-1U-UM	19" / 23" EIA	1U	SIDE RAIL MOUNT	1



DISTRIBUTION CABINETS FOR FIBER RAPID DEPLOYMENT

RUGGEDIZED PLC FIBER SPLITTERS



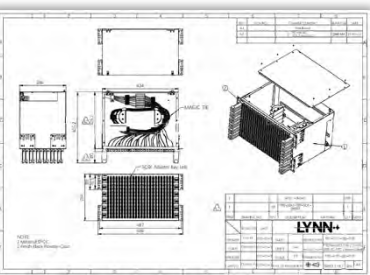
Ruggedized PLC (planar lightwave circuit) fiber splitters are available in a number of configurations and are designed for extreme temperatures.

Key Features

- Ruggedized breakout cable
- Bend-insensitive single mode fiber with varying breakout lengths
- Stock and custom configurations
- SC/APC connectors

PART NUMBER	CONFIGURATION	INPUT LENGTH	OUTPUT LENGTH	CONNECTORS
FS-RR-102-GH-SASA-M	1 X 2	51	60	SC/APC
FS-RR-104-GH-SASA-M	1 X 4	51	60	SC/APC
FS-RR-A04-GH-SASA-M	1 X 4 (QTY 2)	51	60	SC/APC
FS-RR-C04-GH-SASA-M	1 X 4 (QTY 4)	51	60	SC/APC
FS-RR-108-GH-SASA-M	1 X 8	51	60	SC/APC
FS-RR-A08-GH-SASA-M	1 X 8 (QTY 2)	51	60	SC/APC
FS-RR-B08-GH-SASA-M	1 X 8 (QTY 3)	51	60	SC/APC
FS-RR-C08-GH-SASA-M	1 X 8 (QTY 4)	51	60	SC/APC
FS-RR-116-GH-SASA-M	1 X 16	51	60	SC/APC
FS-RR-A16-GH-SASA-M	1 X 16 (QTY 2)	51	60	SC/APC
FS-RR-132-GH-SASA-M	1 X 32	51	60	SC/APC
FS-RR-164-GH-SASA-K	1 X 64	51	60	SC/APC
FS-RR-202-GH-SASA-M	2 X 2	51	60	SC/APC
FS-RR-204-GH-SASA-M	2 X 4	51	60	SC/APC
FS-RR-208-GH-SASA-M	2 X 8	51	60	SC/APC
FS-RR-216-GH-SASA-M	2 X 16	51	60	SC/APC
FS-RR-F16-GH-SASA-M	2 X 16 (QTY 2)	51	60	SC/APC
FS-RR-232-GH-SASA-M	2 X 32	51	60	SC/APC
FS-RR-264-GH-SASA-M	2 X 64	51	60	SC/APC

*Custom configurations available upon request.



ENGINEERING SUPPORT

NSI employs dedicated customer experience and solutions architects to ensure your design addresses current and future technology trends. Whether your next installation requires LYNN cabinets, cables, patch panels or other connectivity solutions, the NSI team will help with system engineering and design.

KITTING & PROJECT STAGING

NSI offers kitting and project staging, ensuring even the largest and most complex systems deploy rapidly and operate reliably for years to come. All LYNN cabinets can be factory-configured with LYNN and third-party components prior to shipping, providing a streamlined deployment process that reduces freight and field labor.



CONTACT US



1841 Industrial Ave
San Angelo, TX 76904
(325) 262-4031

www.unitedtelsupply.com



and

